

The abovementioned developed elements of informational support of the process of three-dimensional clothing modeling can be used in the development of 3D CAD software for designing of the clothes.

References

1. САПР JULIVI [Электронный ресурс]. – Режим доступа: <http://julivi.com> (дата обращения 5.01.2016).
2. Пашкевич К. Л. Проектування тектонічних форм одягу з урахуванням властивостей тканин: Монографія. – К.: ПП «НВЦ «Профі», 2015. – 364 с.

UDC 7.05:745

DESIGN OF A COLLECTION OF MODELS OF CLOTHES FROM DESIGNER'S KNITTED CLOTHS

N. Samutsina, associate professor of the Department of Design

A. Bryndikova, student

Vitebsk State Technological University, Belarus

Key words: designer's knitted cloths, collection of models of clothes.

Abstract. The creative source for design of knitted cloths and a collection of models on their basis is found in this paper. At the same time the history of creation of elements of a collection is studied and color scale is defined.

At present work on creation of a new assortment of materials is urgent for production of a women's knitted clothing. Due to specified, two objectives are set: development of designer's knitted cloths and creation of sets of female models of casual clothes for young women. The main concept of a collection will be at the same time creation of functional and practical clothes. In a research the following tasks are set:

- to find a creative source for designing of knitted cloths and a collection of models on their basis;
- to study history of creation of elements of a collection;
- to develop designer's knitted cloths for collection models;
- to create a model range of a collection;
- to determine color scale of the sets constituting a collection.

In case of implementation of the first research problem work with analogues collections of brands of the famous designers of seasons of 2014 - 2016 was carried out. The main features were determined during creation of a collection of clothes for young women with use of knitted cloths. It is revealed that now urgent to constitute sets from the dresses and vests made of knitted cloths with various impressive surface. Creative sources such as pop art style, a font graphics and visual illusions are

established. Therefore the main image of a collection is determined as an active courageous young urban woman possessing sense of style.

In case of execution of the second research problem material about an origin of a vest, its feature and a version was built. It is also determined that this detail of a suit from the moment of the emergence became the most fashionable, integral and universal part of clothes which till today's time doesn't lose the relevance. Urgent types of sleeves and armholes in knitted fashion are established: a sleeve «bat» and a style, derivative of it, with a deep armhole. Change of a female silhouette of a knitted dress is considered and determined that now the fitted models and sheath dresses are urgent.

It is established that implementation of research purposes is necessary parallel work with analogs and creative sources that in interrelation to develop designer's knitted cloths. Materials are decided to be developed different types of drawings of the interlacing creating the various invoice on a surface. Combination of materials is also of great importance as utilitarian and information and esthetic qualities of models depend on it.

Basic data for production of a collection were chosen: for dresses – superimposed two-color bilateral Jacquard with the drawing in the form of the visual illusions created by placement in a cloth of small strokes and lines and also the combined interlacing, for vests – the two-color bilateral combined Jacquard with the relief invoice. In a rapport of drawings of knitted cloths the lines located in a chaotic order placed according to the law of composition with an identical size of elements and distance between them and different turns are used. As a result the kindled evenly drawing of a surface turns out. Additional finishing materials – an eraser 2/2 and an inlay from a smooth surface (figure 1). For designer's products high-quality raw materials are used and the most interesting interlacing is chosen, technical procedure of production of the developed product and the sequence of its handling is constituted.

Creation of a creative collection is based on two principles: color nuance and contrast. One of means of expression is the color accent: a combination of achromatic black and white colors to the accenting bright green. This choice is caused by the corresponding tendencies in which allocation of the composite center by means of a color spot is very urgent, bright, effectively and original. Also green color is a trend of this year.

With the knitted cloths containing the effective graphical drawing it was decided to emphasize with elements of pop art style – the active large texts in the form of alphabetic applications bearing in themselves semantic loading. Use of all these elements sets a certain style of models – the daily city «Casual» reflecting nature and the identity of the owner.

As the collection is creative, it was important to achieve high esthetic expressiveness of products. They possess optimal form, functional, constructive and esthetic value. The given images are courageous and effective therefore the collection makes emotional impact.

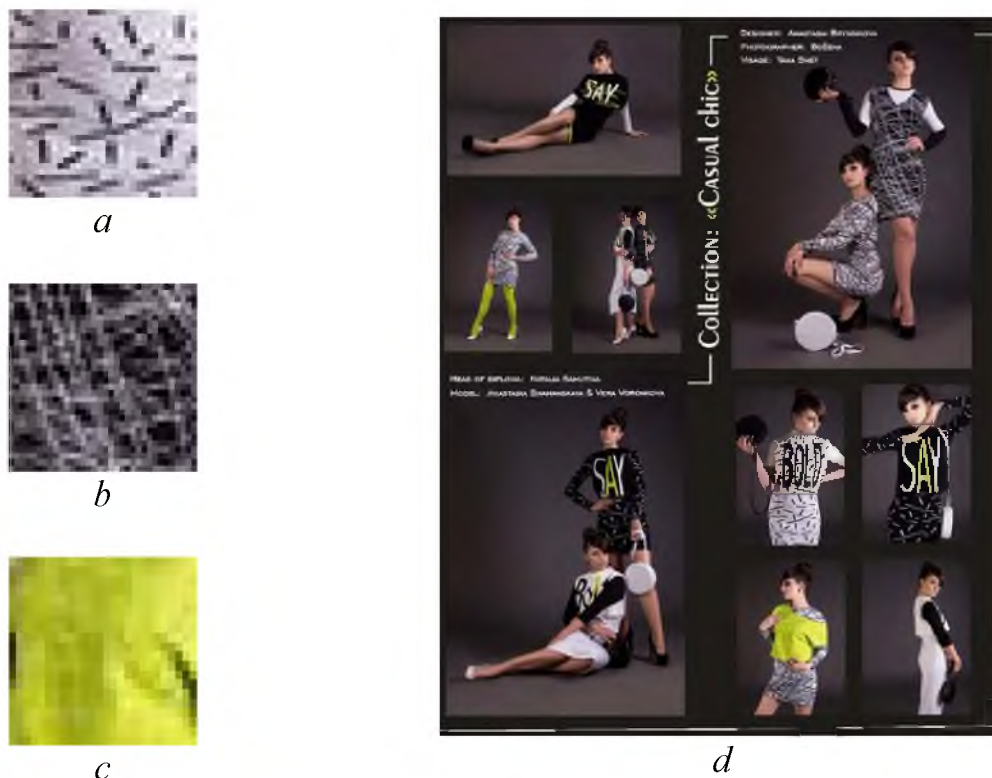


Figure 1 – Author's knitted cloths (a - c) and a clothes collection with their use (d)

Models were sent away during the work practice on LLC «Polesie», Pinsk, the Republic of Belarus. The combination of classical and sports styles brought a youth orientation, an opportunity to carry sets as casual clothes. Models can be produced also by small batches. They are exclusive, stylish, effective, original and quite comfortable that will allow them to be demanded both on national, and international markets.

UDC 7.05 : 745

HALF-WOOLEN COMPANION FABRICS FOR WOMEN'S CLOTHING

A. Shpilevskaya, student

*N. Samutina, associate professor of the Department of Design
Vitebsk State Technological University, Belarus*

Key words: half-woolen fabrics, companion fabrics.

Abstract. The creative source for design of pack-fabrics is found in work. At the same time the history of creation of elements of a collection pack- clothes is studied and color scale is defined.

Half-woolen fabrics are one of the most valuable kinds of materials. They are beautiful, strong, do not rumple and have high heat-shielding properties. At present